

## MLS Area 3

## Residential Statistics



## November 2021

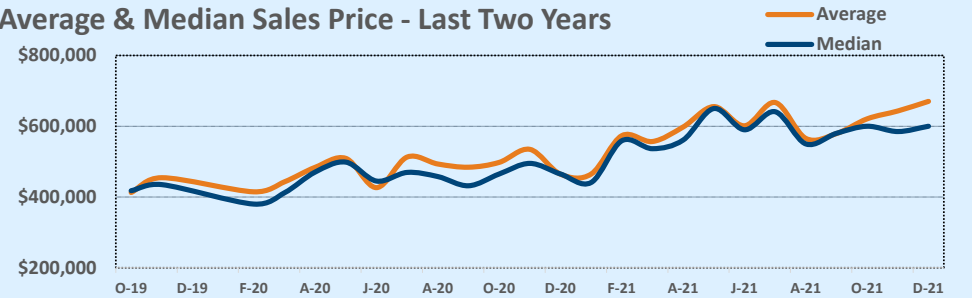
Listings	This Month			Year-to-Date		
	Nov 2021	Nov 2020	Change	2021	2020	Change
Single Family Sales	53	42	+26.2%	544	494	+10.1%
Condo/TH Sales	20	7	+185.7%	192	131	+46.6%
<b>Total Sales</b>	<b>73</b>	<b>49</b>	<b>+49.0%</b>	<b>736</b>	<b>625</b>	<b>+17.8%</b>
New Homes Only	19	6	+216.7%	97	59	+64.4%
Resale Only	54	43	+25.6%	639	566	+12.9%
Sales Volume	\$48,931,650	\$22,756,220	+115.0%	\$444,117,234	\$300,192,488	+47.9%
New Listings	31	55	-43.6%	840	760	+10.5%
Pending	47	15	+213.3%	100	604	-83.4%
Withdrawn	2	6	-66.7%	77	68	+13.2%
Expired	--	--	--	--	--	--
Months of Inventory	0.5	1.2	-55.3%	N/A	N/A	--

Price Range	This Month			Year-to-Date		
	New	Sales	DOM	New	Sales	DOM
\$149,999 or under	--	--	--	1	--	--
\$150,000- \$199,999	--	--	--	16	18	42
\$200,000- \$249,999	1	1	4	26	23	45
\$250,000- \$299,999	1	--	--	16	14	6
\$300,000- \$349,999	1	2	74	16	28	25
\$350,000- \$399,999	3	4	69	41	33	40
\$400,000- \$449,999	6	4	7	49	50	31
\$450,000- \$499,999	2	7	27	91	67	27
\$500,000- \$549,999	7	4	6	86	90	20
\$550,000- \$599,999	3	13	17	115	77	14
\$600,000- \$699,999	5	14	25	174	148	16
\$700,000- \$799,999	6	6	11	88	69	13
\$800,000- \$899,999	5	5	23	55	53	15
\$900,000- \$999,999	2	4	4	38	28	8
\$1M - \$1.99M	2	9	8	27	37	6
\$2M - \$2.99M	--	--	--	--	--	--
\$3M+	1	--	--	1	1	2
<b>Totals</b>	<b>31</b>	<b>73</b>	<b>21</b>	<b>840</b>	<b>736</b>	<b>20</b>

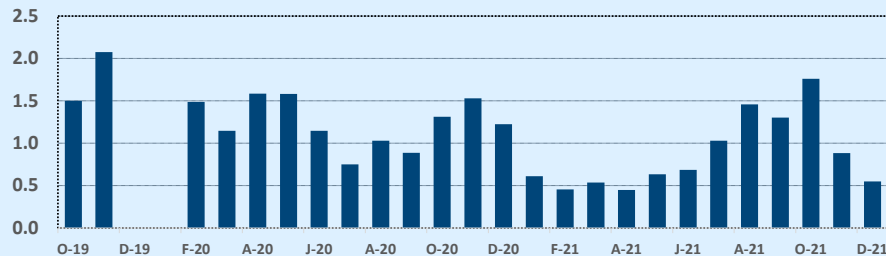
Average	This Month			Year-to-Date		
	Nov 2021	Nov 2020	Change	2021	2020	Change
List Price	\$641,184	\$461,664	+38.9%	\$578,791	\$479,093	+20.8%
List Price/SqFt	\$388	\$318	+21.8%	\$369	\$309	+19.4%
Sold Price	\$670,297	\$464,413	+44.3%	\$603,420	\$480,308	+25.6%
Sold Price/SqFt	\$402	\$320	+25.5%	\$384	\$310	+23.8%
Sold Price / Orig LP	103.0%	100.4%	+2.5%	103.7%	99.2%	+4.6%
Days on Market	21	20	+3.1%	20	25	-19.0%

Median	This Month			Year-to-Date		
	Nov 2021	Nov 2020	Change	2021	2020	Change
List Price	\$589,000	\$450,000	+30.9%	\$550,000	\$450,000	+22.2%
List Price/SqFt	\$377	\$312	+20.7%	\$360	\$301	+19.3%
Sold Price	\$600,000	\$465,000	+29.0%	\$575,000	\$452,000	+27.2%
Sold Price/SqFt	\$395	\$318	+24.2%	\$374	\$306	+22.3%
Sold Price / Orig LP	100.0%	100.0%	+0.0%	101.0%	100.0%	+1.0%
Days on Market	7	6	+16.7%	6	7	-14.3%

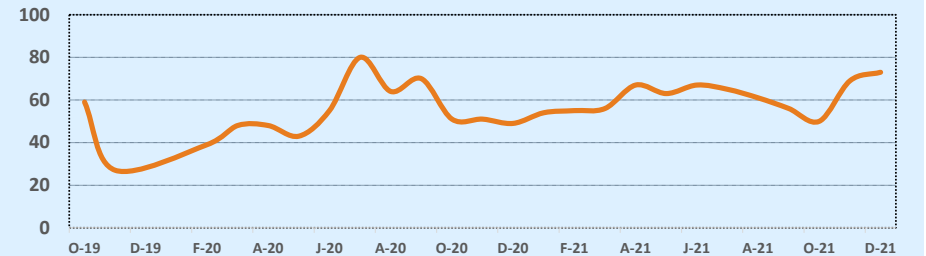
### Average & Median Sales Price - Last Two Years



### Months of Inventory - Last Two Years



### Number of Sales - Last Two Years



Based on information from the Austin Board of REALTORS® (alternatively, from ACTRIS). Neither the Board nor ACTRIS guarantees or is in any way responsible for its accuracy. The Austin Board of REALTORS®, ACTRIS and their affiliates provide the MLS and all content therein "AS IS" and without any warranty, express or implied. Data maintained by the Board or ACTRIS may not reflect all real estate activity in the market.